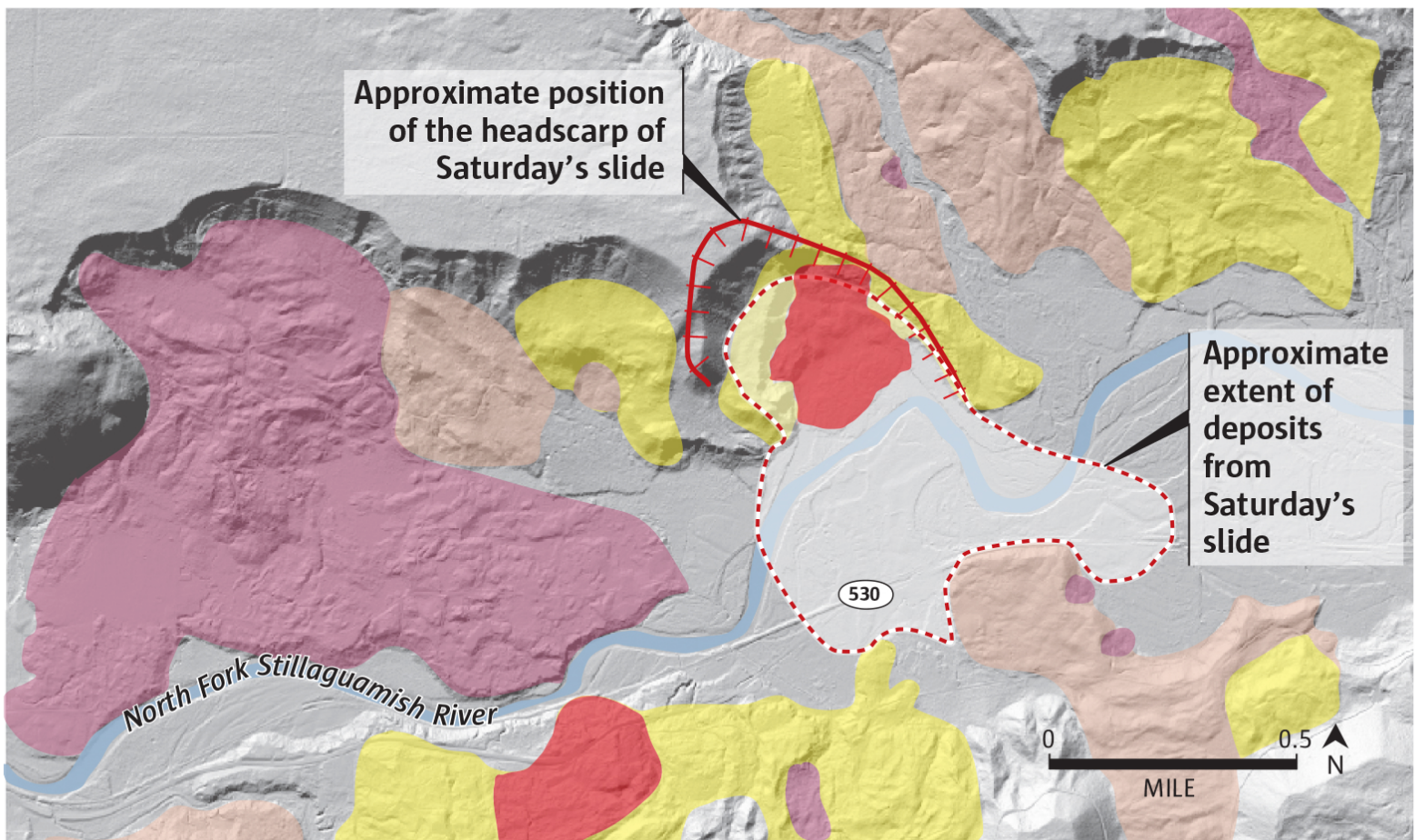


Looking at landslides with high-tech eyes

A USGS analysis of lidar images reveals more than a dozen previous landslides along the North Fork of the Stillaguamish, one more than twice as big as Saturday's. Lidar can reveal previously unknown slides, and geologists say use of the mapping technique should be expanded.

RELATIVE AGE
OF LANDSLIDE DEPOSITS*

Newest Oldest



*Slides that are the same color did not necessarily happen simultaneously. All struck within the past 14,000 years, the most recent in 2011.

Sources: USGS, Snohomish County Information Services

THE SEATTLE TIMES